



GROWING TOGETHER

# SAMSON RV





## SAMSON RV 150

The SAMSON RV 150 is based on a solid and hydraulically articulated design, making the mixer easy to work with and applicable in most types of slurry storages.



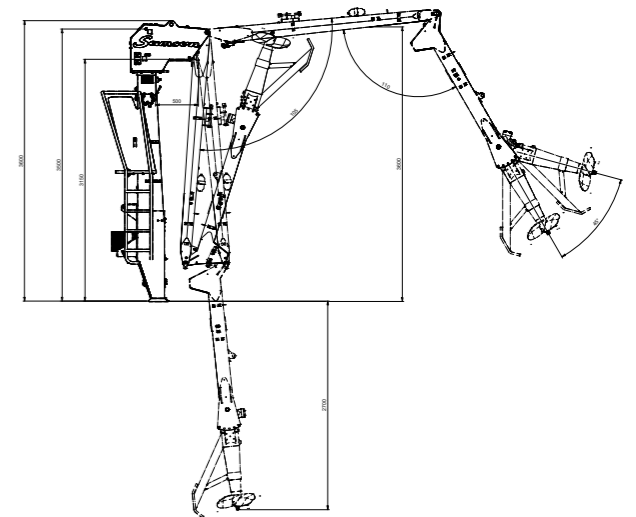
## Flexible full-hydraulic mixer Easy to operate – easy to transport

The RV 150 is ideal for use in slurry storages of any size. RV 150 can mix slurry in both surface and underground slurry storages. The flexible mixing arm easily extends over high walls up to 3 m and down into underground slurry storages, lagoons, etc.

The mixer is designed for a 150 HP tractor, meaning that even a smaller tractor can handle large slurry storages. The SAMSON RV 150 has its own fully hydraulic system, making the articulated mixing arm extremely flexible, reliable, and easy to operate. RV 150 is extremely stable and can be kept level in all conditions, as the single support leg can be adjusted hydraulically.

The SAMSON RV 150 is produced according to SAMSON's high-quality standards, ensuring that the product lasts a long time and is easy to work with. All steel parts are thoroughly surface treated and consist of many galvanised elements, making the unit extra resistant and easy to clean.

The SAMSON RV 150 remains stable during transport. The very compact transport position is easily achievable.



# Key features

## SAMSON RV 150



### ADJUSTABLE MIXING ARM

The agile mixing arm easily reaches over high storage tank walls (up to 3 meters) and deep into underground slurry containers, lagoons, and the like (down to a depth of 5 meters). The mixer's turning function is rotatable at an angle of 35 degrees to each side. The articulated inner and outer arm can be adjusted up and down hydraulically, meaning the positions of the mixer are unlimited. In addition to being usable in both above-ground and underground tanks, the SAMSON RV 150 also handles tasks in, for example, covered tanks and in containers with small openings.



### EASY OPERATION

All hydraulic functions are operated from the control panel via the tractor's hydraulics. The control panel is thoughtfully placed for the user's overview and is easily accessible. The simple construction makes the control panel reliable and easy to operate. If one prefers to operate the machine via electronic control from the tractor cabin, this can also be connected.



### THE PROPELLER MAKES THE WORK EFFICIENT

The SAMSON RV 150 is designed with a special propeller that gathers the slurry into a jet stream powerful enough to mix slurry even in the most difficult cone bottoms. Especially for pig slurry, it is important to use the hydraulic tilt of the mixing head to mix up sediment and dry matter in order to ensure the homogeneity of the slurry.



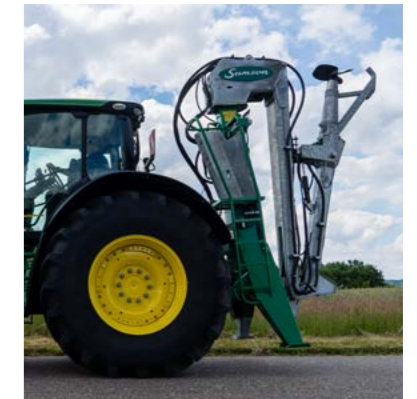
### RELIABLE HYDRAULIC SYSTEM

The SAMSON RV 150 is a fully hydraulic mixer with its own hydraulic system, designed to transfer 150 HP to the propeller. The system includes its own filter, and an own oil cooler can also be fitted. The integrated system enhances the functionality of the and contributes to increased operational reliability. The RV 150 can also be operated via an optional electrical control.



### HYDRAULIC SUPPORT LEG CREATES STABILITY

The SAMSON RV 150 is equipped with a hydraulic support leg that ensures safe positioning during mixing. A hydraulic cylinder between the RV 150 and the tractor allows for adjustment of the position before it is locked, so the unit stands straight under all conditions, and the support leg includes the possibility for adaptation to the ground around the slurry storage tank. This provides safety during operation.



### STABLE TRANSPORT POSITION

During transport, the SAMSON RV 150 folds into a compact unit, ensuring smooth and easy transport. The mixer is easy to put into transport position, and a stable locking system ensures the mixer is held firmly, so it neither swings to the sides nor backward during transport. This increases efficiency during transport and improves road safety.



## Mixing before application pays off

During storage in a slurry storage tank, the nutrients will segregate. Especially dry matter, phosphorus, organic nitrogen, and some micronutrients will separate and be found in higher concentration in the bottom layer and the liquid layer. Studies have shown that the phosphorus content in the bottom layer of pig slurry can be several times higher than in the middle layer if the slurry in the storage tank is not mixed. Ammonia, nitrogen, and potassium do not segregate as much since these nutrients are water-soluble.

By thoroughly mixing slurry before application, two advantages are achieved:

- The slurry becomes homogeneous and easier to pump. This allows the slurry tanker to be completely emptied.
- The concentration of nutrients (especially phosphorus) is consistent from the first to the last load of slurry.

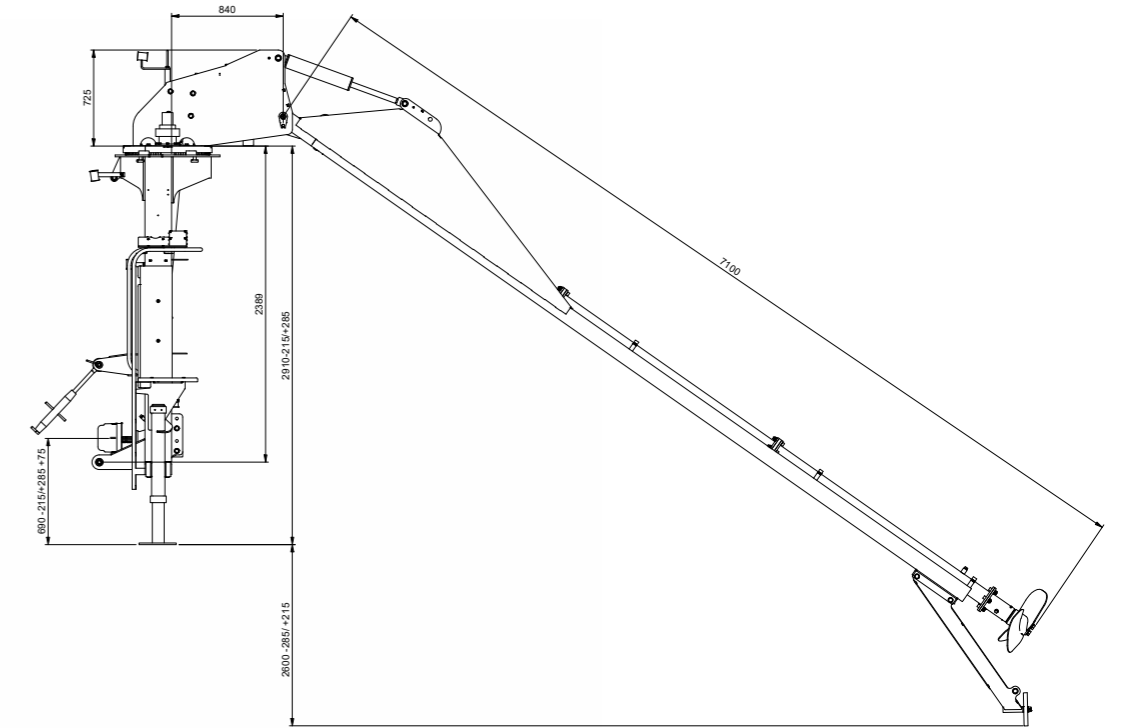
Be aware that some types of slurry (especially pig slurry) need to be mixed continuously even during application, as the nutrients segregate again just a few hours after mixing. Slurry tankers from SAMSON have a built-in mixing function using the unloading pump, which helps to ensure that the slurry applied on the field maintains a constant content of nutrients and organic material.



## SAMSON RV 200

The RV 200 is SAMSON's powerful mixer for the professional farmer or contractor. The mixer can be equipped with a propeller for a 200 or 160 HP tractor. The RV 200 is constructed with a 7-meter-long mixing arm, fixed tower height, and hydraulic support legs. The mixing arm can automatically swing from side to side in the tank during mixing, so that sediment does not settle at the bottom of the tank.

The propeller creates an exceptionally powerful jet that can mix up even the most difficult cone bottoms. The SAMSON RV 200 is developed in accordance with SAMSON's high-quality standards. The mixer has many galvanised parts and is robustly constructed. Furthermore, the treated surfaces of the mixer ensure easy cleaning. Thus, the RV 200 is characterised by low maintenance costs and a long lifespan.



## Mechanical mixer for mixing the largest slurry storages

The SAMSON RV 200 is a solid mechanical mixer that reaches far and deep into even the largest slurry storage tanks. The SAMSON RV 200 is mounted in the tractor's three-point hitch, and for transport, the mixing arm is rotated over the tractor.

# Key features

## SAMSON RV 200



### 7 METER LONG PIVOTABLE MIXING ARM

The SAMSON RV 200 is equipped with a 7 meter long mixing arm. The mixer is fitted with an overload valve, which, together with the oil motor, protects the mixing arm against lateral overload. The RV 200 can turn 45 degrees to each side (a total of 90 degrees). Through simple adjustable sensors, the arm can be set according to the deflection angle during automatic pivoting from side to side, which provides an adjustment option in each individual storage. This provides flexibility and better and easier mixing. At the same time, the system ensures quick and homogeneous mixing of the entire slurry storage tank.



### HEIGHT-ADJUSTABLE SUPPORT LEGS

The RV 200 is equipped with hydraulic support legs, making it easy to adapt the mixer to the terrain and adjust it to the correct working height at the slurry storage tank. A hydraulic cylinder locks the RV 200 securely to the tractor, ensuring it stands straight under all conditions, and the support leg also includes the possibility for adaptation to the ground around the tank. This ensures safety during operation.



### THE PROPELLER MAKES THE WORK EFFICIENT

The SAMSON RV 200 is designed with a special propeller that gathers the slurry into a single jet stream, powerful enough to mix up even the most difficult cone bottoms. The propeller can be supplied with two different diameters for respectively 160 HP and 200 HP



### MECHANICALLY DRIVEN MIXER

The SAMSON RV 200 is mechanically driven with direct drive from the tractor's PTO shaft. The mixer is equipped with two powerful bevel gears, each designed for 225 HP, and the propeller is driven at a capacity of 1000 revolutions per minute. The driveline from the PTO to the propeller is designed with an emphasis on robustness and stability, which characterises the good quality of the SAMSON product.



### EASY OPERATION

All hydraulic functions are operated from the control panel via the tractor's hydraulics. The control panel is thoughtfully placed for the user's overview and is easily accessible. The simple construction makes the control panel reliable and easy to operate. If one prefers to operate the machine via electronic control from the tractor cabin, this can also be connected.



### STABLE TRANSPORT POSITION

The RV 200 is mounted in the tractor's three-point hitch, and for transport, the mixing arm is rotated over the tractor. Due to the length of the arm, special precautions must be taken when driving on roads. In some countries, a reach of more than 2 m is not permitted.

## **SAMSON service and dealer network**

When you choose a SAMSON product, you will benefit from our large and well-established network of dealers, who are available to provide excellent service and special knowledge of our machines and equipment.

SAMSON dealers are in close and continuous contact with SAMSON AGRO, who place great importance on individual SAMSON specialists achieving expert knowledge through the SAMSON ACADEMY training program. A smooth and efficient service concept also ensures that every customer receives professional service before, during and after a purchase.

SAMSON AGRO maintains a large stock of spare parts to ensure the fast and efficient maintenance and upgrade of al



A man in a checkered shirt and green gloves is working in a cornfield at sunset. He is holding a wooden handle over his shoulder, and the sun is low on the horizon, creating a warm, golden glow. The corn plants are in the foreground and background, with some leaves in focus and others blurred.

## **FERTILISER BASED ON NATURAL NUTRIENTS**

SAMSON AGRO produces slurry tankers, muck spreaders and universal spreaders with the aim of achieving maximum application efficiency and optimal use of the nutrients in natural fertiliser. We supply a wide range of application machines, implements and application technology, where all elements in the fertiliser process are considered. Our goal is to meet the agricultural industry's demand for innovative, environmentally sound, high quality solutions for the application of natural fertilisers.

# Technical data

		RV 150	RV 200
Dimensions when folded	(LxWxH) M	3.8 x 2.25 x 2.95 / 2.60	8.15 x 2.88 x 3.85*
Weight	kg	2,000	1,800
PTO	o/min.	1,000	1,000
PTO	min. HK	150	160/200
Hydraulics:		1 double-acting outlet - 180 bar - 20 l/min.	
Propeller revolutions	o/min.	1,000	1,000
Propeller diameter	mm	540	570

\* Dimensions when mounted on a tractor

Dealer

